

SUBSEA MAGNETIC SWITCH

MODEL MS01



DESCRIPTION

The CAR Model MS01 is a magnetically operated single-pole normally open contact switch specifically designed for use in a subsea environment. Its construction material is suitable for subsea usage and is available with a variety of subsea connectors.

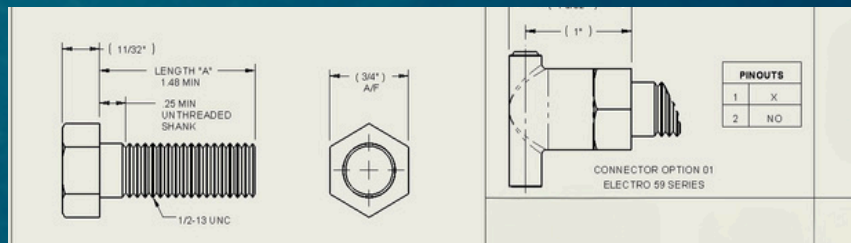
SPECIFICATIONS

- Pressure Rating: 10,000 PSI
- Housing Material: 316 Stainless Steel
- Actuation Distance: 0.25 inch
- Contact Ratings: 5 Watt Max.
- Power Switching: 0.35 Amps Max.
- Voltage Switching: --
- Current Resistance: 0.16 μ F Max.
- Capacitance Operating: 0.2 pF Typical
- Temperature Operate: -40 to +85 °C
- Time Release: 0.35 mSec Max.
- Shock: 150 g @ 11 mSec – 1/2 sine
- Vibration: 10 g @ 50-2000 Hz, 20 μ Sec Max.



SENSOR DIMENSIONS:

- Length "A": 1.48 MIN
- 0.75" AF (Across Flats)
- 0.25 MIN Unthreaded Shank
- 1/2-13 UNC Threads



ACTUATOR PART NUMBER: MSA1

- MSA1-LS: Standard Length Actuator
- MSA1-LX.xx: Custom Length, where X.xx=custom length in inches (e.g., L1.5=1.5 inches)

